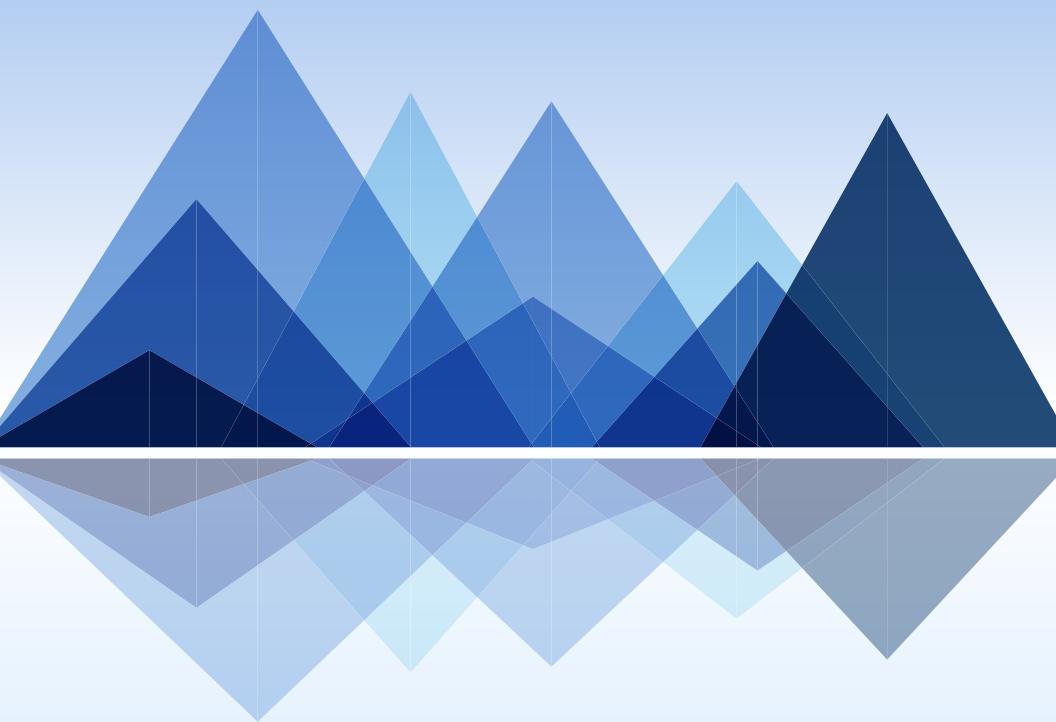
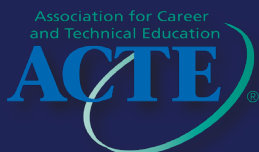


WBL Conference

Program Guide



April 28–29, 2022
Salt Lake City, Utah



WBL CONFERENCE 2022

Welcome to ACTE's National & Utah's Work-Based Learning Conference!

Dear Colleagues:

We have an exciting two days of professional development and networking planned for you, including keynote speaker Dr. Kevin J. Fleming and over 40 concurrent sessions. You can also learn more about how you can get involved with the ACTE Work-Based Learning / Youth Apprenticeship Section (WBL/YA) during the Committee presentations on Thursday during lunch (1:00–2:30 p.m. MST) and during the WBL/YA Section Business Meeting on Friday from 12:30–1:20 p.m. MST. Be sure to stop by your Region's Hospitality Room on Thursday from 3:30–4:30 p.m. MST to network with other work-based learning (WBL) professionals from your region!

Thank you for joining us. We hope you enjoy the conference!



Janice Killian
*Utah ACTE WBL Division President
CTE Coordinator & WBL Specialist
Davis School District
Bountiful, Utah*



Jan Jardine
*ACTE Work-Based Learning / Youth Apprenticeship Section Chair
Work-Based Learning Coordinator & Provo CAPS Director
Provo City School District
Provo, Utah*

WBL CONFERENCE 2022

Special Thanks to the Conference Planning Committee

- Jan Jardine, District Work-Based Learning Coordinator, Utah
- Dana Wilson, Work-based Learning Program Coordinator, Virginia
- Sapph Espinoza, Career, Technical, and Agricultural Education Coordinator, Georgia
- David Smith, Business and Entrepreneurship Instructor, Utah
- Marianne Moore, Secondary Transition Instructional Specialist, Virginia
- Tom Wood, Work-based Learning Director, Utah
- Anne Peterson, College and Career Adviser & Work-Based Learning Coordinator, Idaho
- Mike Hassler, Work-Based Learning Coordinator, Utah
- Laura DiNardo, Senior Manager of Strategic Partnerships, ACTE
- Kelli Diemer, Director of Membership, ACTE

Utah ACTE WBL Division Board

- Janice Killian, President
- Michael Hassler, President-Elect
- Jan Jardine, Past President
- Brian Blake, Secretary/Treasurer
- Breckon Heywood, USBE WBL Specialist
- Brandon Aycock
- David Smith
- Cher Burbank
- Christine Thomas
- Robyn Dunn
- Brian Blake
- Aubrey Turnbow
- Tom Wood
- Betty Jo Western
- David Ruf

ACTE WBL/YA Section Policy Committee

- Jan Jardine, Section Chair
- Tony Trapp, Region I
- Jason Van Nus, Region II
- Jim Mighlig, Region III
- Amber Williams, Region IV
- Jason Butcher, Region V
- Stephen Casa, Advocacy Chair
- Deana Patterson, Awards Chair
- Dana Wilson, Professional Development Chair
- James Egenrieder, Postsecondary WBL
- Susan Gubing, WBL Educators
- Tony May, State Workforce

WBL CONFERENCE 2022

Special Thanks to our 2022 ACTE & Utah Work-Based Learning Conference Sponsors & Exhibitors Committee

CATAPULT



Exhibitors

| | |
|--------------------------------|----------------|
| Bring Your 'A' Game | Maxx Potential |
| Competition University | NAF |
| Dr. Kevin J Fleming / Catapult | NCHSE |
| Eduready360 | Seamless WBL |
| Guided Compass | Tiggbee |
| ICF / CYAI | Transeo |
| InPlace Software | VEI |
| Jobspeaker | WorkED |
| MajorClarity | You Science |

Schedule At-A-Glance

Wednesday, April 27, 2022

| MT | |
|--------------|--|
| 4:00–7:00 pm | Badge pick-up — Hilton Garden Inn Lobby |
| 4:30–6:30 pm | Pre-conference Welcome Reception — Hilton Garden Inn Lobby, Sponsored by Microburst Learning |
| 6:00–8:00 pm | ACTE WBL / YA Section Policy Committee Meeting (by invitation only) |

Thursday, April 28, 2022

| MT | |
|---------------------|---|
| 8:30 am | Registration opens |
| 8:30 am – 9:30 am | Wake up with Work-Based Learning Event (w/ rolls & coffee) Sponsored by EduReady360 |
| 9:30 am – 10:30 am | Exhibitor Engagement |
| 10:30 am – 11:45 am | Welcome & Keynote Speaker Sponsored by Transeo |
| 12 pm – 12:50 pm | Concurrent session 1 |
| 1 pm – 2:20 pm | Lunch & ACTE WBL Committee meetings Sponsored by NAF |
| 2:30 pm – 3:20 pm | Concurrent session 2 |
| 3:30 pm – 4:30 pm | ACTE WBL Regional Hospitality Rooms Sponsored by Jobspeaker |

Friday, April 29, 2022

| MT | |
|---------------------|---|
| 8:15 am – 9:20 am | Registration opens /rolls & coffee Sponsored by WorkED |
| 8:15 am – 9:15 am | Roundtable presentations |
| 9:30 am – 10:20 am | Concurrent session 3 |
| 10:20 am - 10:50 am | Friday morning break & visit exhibitors-Sponsored by Catapult |

General Sessions

Friday, April 29, 2022 (continued)

| MT | |
|---------------------|---|
| 10:50 am – 11:20 am | General Session 2 + Awards Celebration Sponsored by Seamless WBL |
| 11:30 am – 12:20 pm | Concurrent session 4 |
| 12:30 pm – 1:20 pm | Lunch & ACTE WBL Business Meeting & visit exhibitors Sponsored by Seamless WBL |
| 1:30 pm – 2:20 pm | Concurrent session 5 |
| 2:30 pm – 3:20 pm | Concurrent session 6 |
| 3:30 pm – 4:00 pm | Closing Session + door prizes |

Thursday, April 28

Registration & Wake up with Work-Based Learning!

Sponsored by Eduready360

8:30–9:30 a.m. MT



Welcome to ACTE's National and Utah's Work-Based Learning Conference 2022! Start your day with an opportunity for collaborative conversation and networking. Those interested in participating should report to the General Session meeting space (150 A-H). Facilitators will be located at tables throughout the space to encourage discussion around some of the "hot topics" in work-based learning, such as student transportation concerns, supporting students with diverse needs, increasing participation in your program, and more!

Opening General Session & Keynote Speaker

Sponsored by Transeo

10:30–11:45 a.m. MT



Keynote Speaker: Dr. Kevin Fleming



(Re)Defining The Goal: Providing A Competitive Advantage for All Learners

Dr. Kevin J Fleming is an educator, national speaker, entrepreneur and author. He is the producer of multiple, viral animation videos including Success in the New Economy, author of the educational bestseller, (Re)Defining the Goal, and currently vice president of

Planning and Development at Norco College in Southern California. Dr. Fleming is a passionate advocate for ensuring all students intentionally equip their potential, enter the labor market with a competitive advantage and find their purpose, on purpose.

Lunch & WBL Committee Meetings

Sponsored by NAF

1:00–2:20 p.m. MT



During lunch, learn more about the WBL / YA Section’s structure. Policy Committee Chair Jan Jardine will introduce the other policy committee members. The Awards, Advocacy, and Professional Development chairs will present additional volunteer opportunities and ways that you can get involved with the section.

Be sure to visit Dr. Kevin J. Fleming in the exhibit hall for a book signing opportunity!

Regional Hospitality Rooms

Sponsored by Jobspeaker

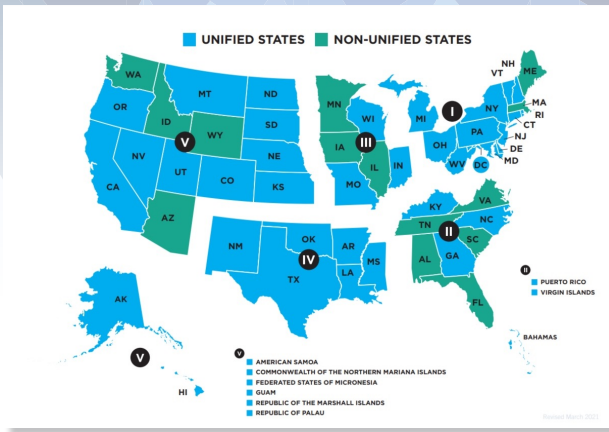
3:30–4:30 p.m. MT



After Concurrent Session #2, please join us in your Region’s hospitality room for networking and light refreshments.

| Region | Room Assignment |
|--|-----------------|
| Region I: DC, MA, CT, MD, ME, MI, NH, NJ, OH, PA, RI, VT, WV | 209 |
| Region II: AL, FL, GA, KY, NC, SC, TN, VA | 213 |
| Region III: IA, IL, IN, MN, MO, WI | 220 |
| Region IV: AR, LA, MS, NM, OK, TX | 226 |
| Region V: AK, AZ, CA, CO, HI, ID, KS, MT, ND, NE, NV, OR, SD, UT, WA, WY | 224 |

General Sessions



Friday, April 29
Registration & Roundtable Presentations
Sponsored by WorkEd
8:15–9:15 a.m. MT

WorkED

Start your day with coffee and conversation! Join us in the General Session hall (150 A-H) for roundtable presentations. Each roundtable will last 30 minutes. Attendees will have the opportunity to participate in two roundtable sessions.

Friday General Session and Awards Presentation
Sponsored by Seamless WBL
10:30–11:20 a.m. MT



Join us as we celebrate the 2022 Seamless Work-Based Learning Professional of the Year.

Presented annually since 2021, this award recognizes a work-based learning professional who has demonstrated an overall contribution to student success through community engagement, leadership roles, participation in student organizations, WBL classroom innovations, and WBL advocacy.

The ACTE WBL/YA Section thanks the National Center for College and Career Transitions (NC3T) for their generous sponsorship of the Seamless Work-Based Learning Professional of the Year Award. NC3T’s vision is two-fold: “every learner with a dream and a plan, and every community with a capable and ready workforce.”

Lunch & ACTE WBL/YA Section Business Meeting

Sponsored by Seamless WBL
12:30–1:20 p.m. MT



During lunch, Policy Committee Chair Jan Jardine will lead a WBL/YA Section business meeting. All are welcome to join, and members of the WBL/YA Section will be able to vote on any motions proposed during the meeting.

Friday Closing Session

3:30–4:00 p.m. MT

Be sure to join us for the closing session, where we will be raffling off several prizes — including registrations to CareerTech VISION 2022 and the 2023 WBL Conference!

Concurrent Sessions

Concurrent Session 1

Thursday, April 28

noon–12:50 p.m. MT

Becoming Their First Choice.....150 A-H

Presenter(s): Dr. Kevin J. Fleming

For years, you have forged partnerships, created pathways, and developed programs ... yet we still have empty seats in our classes. Many career & technical educational programs remain the “alternative” or “safety” option. Why doesn’t everyone just “get it” already? It is time to shift our messaging and our approach. We need to (re)define the goal and (re)examine why the tipping point still has not yet occurred towards pathways, industry credentials, career readiness, and the pursuit of gainful employment. It’s time to become their first choice.

How to Have a “Full-House” in Your Work-Based Learning Program...MPDC 213

Presenter(s): Sheri Bryant

Wondering where to get started with Work-Based Learning? Curious who you need to bring to the table to champion this work? Join Sheri in this informative session on the tools she has used with her team, Jeffco Career Links, in building a small yet mighty team to support and manage work-based learning in a district of 80,000+ students. Attendees will leave with a great “poker hand” of tools and ideas for engaging students, educators and industry partners.

Certifying Cooperative Education Coordinators.....MPDC 105

Presenter(s): John Foster (NOCTI)

Providing a WBL experience is key to CTE learner success, yet without system coordination and supervision, the experience becomes a failure for everyone involved. Using a nationally standardized co-op certification, combined with state labor law, learning modules and a state license is one state’s system that works! Come learn how you can duplicate that system.

Level Up Your Work Based Learning!.....MPDC 209

Presenter(s): Susan Leon

Work-based learning is a vital piece to the CTE delivery model. Studies show that well-articulated and planned WBL experiences increase graduation rates, postsecondary enrollment, and future success in the workforce. Something this

important should not be left to chance. By attending this session, you will gather the resources and skills necessary to better articulate what WBL experiences happen in your program. In turn, this will help teachers intentionally plan these vital WBL experiences, when they occur in the program, how they are accessible to all students, and how they can better interact with business and industry professionals.

Power Skills & Making Connections.....MPDC 220

Presenter(s): Brenda Straley and additional panelists

How do we teach 21st century skills? How do we engage students and create a positive school culture at the same time? Students need connection before correction and the ability to feel engaged while learning. Learn how to give students a hands-on approach to learning through activities, collaboration, and self-reflection. Help students step outside their comfort zone, explore collaborative methods, thinking errors, and metacognition through brain-based research theory.

Best Practices for High School Work-Based Learning: Case Studies from Around the Country.....MPDC 224

Presenter(s): Denver Supinger

A 2021 report by the nonprofit American Student Assistance and Bellwether Education Partners revealed that experiential on-the-job learning opportunities for high school students vary greatly from state to state, in terms of equal access, program quality and accountability, support structures and more. Based on this research, the session will examine best practices, such as employer financial incentives, intermediaries, cutting edge data collection techniques and more, that educators, employers and policymakers are using to improve and expand work-based learning opportunities to youth younger than 18. We will explore case studies from various states on overcoming common barriers to youth work-based learning, such as liability issues, transportation and lack of employer participation.

Managing Employers & Online Evaluations in AET to Grow Student WBL Experiences.....MPDC 226

Presenter(s): Roger Hanagriff

Student work-based learning experiences are all the rage, and evaluations are a key to validating the experiences. However, evaluations are one more thing to get done and making those evaluations meaningful is sure a task for teachers and

Concurrent Sessions

WBL coordinators! This workshop will share a format for online evaluations you can apply in your own systems to help streamline your efforts. Another important aspect of evaluations is connecting to career pathways and aligned skills, so this workshop will connect those standards using scale-based grading and share ideas you can use. This workshop will also share how evaluations are tracked in TheAET.com system and connect to national content standards. TheAET system annually tracks over 300,000 WBL experiences, so come and learn how you can use these same approaches in your system. This workshop will also share how student WBL project data is summarized for Perkins reporting, local school board reports and how all of this work also develops a student online digital portfolio ... and the key to saving teachers/WBL coordinators time is this is all in one effort! Come and learn how these strategies can be duplicated in your evaluation systems or learn how TheAET systems can assist you in your efforts!

Building Effective Employer Partnerships Through Grant-based Funding....MPDC 228

Presenter(s): Jack Bidlack, Josh Labrie, Chris Russell

Work-based learning depends on sustainable partnerships between employers and institutes of higher education (IHEs). A strategic approach to grants development can serve as the foundation for long-lasting employer-IHE relationships, providing expanded and continuous access to WBL opportunities for students. During this presentation, Northern Virginia Community College (NOVA) will share strategies for building enduring regional pathways to WBL through targeted grant program design. In particular, NOVA will use recent case studies to highlight how a holistic, whole-pipeline approach can increase cooperation among stakeholders, broaden participation and access to WBL, and improve outcomes for students.

Concurrent Session 2

Thursday, April 28

2:30–3:20 p.m. MT

Leaders of Their Own Learning: Student Growth Through Reflection.....MPDC 105

Presenter(s): Ginger Tedder, Mandy Scarpulla, Courtney McCubbins

“We do not learn from experience ... we learn from reflecting on experience.” —John Dewey

Join us as we examine the importance of reflection to move rich work-based

learning experiences from an isolated event to lasting integrated learning. We will look at research supporting reflection and explore several easy-to-use strategies and activities to embed reflection. You will also have an opportunity to share your ideas. We will explore and illustrate how time for reflection can influence students to be leaders of their own learning and empower them to advocate for their own future learning needs and career plans.

Partner Engagement: The Golden Ticket to Student and Program Success....MPDC 209

Presenter(s): Stephen T. Casa, David Rosenberg, Charles Khoury

One of the most effective elements of school redesign is partnering with members of industry and the community. While this is an integral component of career and technical education, it is something that many educators and educational institutions struggle with. This presentation will afford participants real methods and resources to identify, cultivate, implement, and sustain the types of partnerships that will benefit ALL stakeholders but most importantly, students. Authentic examples will be shared so that participants will have these in their toolbox for success.

Meaningful Remote/Virtual Internships.....MPDC 213

Presenter(s): Ann Gomez, Talon Hatch, Christine Thomas, Lori Christensen (Skill Struck)

Often internships, especially for high school students, are limited to their physical location and busy student schedules. However, technology has increasingly opened the door for remote work, and the COVID-19 pandemic has only accelerated it. Remote internships enable students, whether living in a rural area or in a varied school schedule, to have a meaningful internship opportunity that they wouldn't have otherwise. But how do you ensure that students are engaged, safe and having a positive experience with a virtual/remote internship? Skill Struck, along with their district partners from Nebo and Alpine School Districts, among others, want to share the lessons learned, ideas and best practices from their partnerships in providing remote internship opportunities for high school students.

Aligning Work-Based Learning to a Global Economy.....150 A-H

Presenter(s): Heather Singmaster

Today's students will be graduating into a world that is ever more interconnected. One in 10 Americans is foreign born, and local communities—urban, suburban, and rural—are growing more diverse. To take advantage of global market

Concurrent Sessions

opportunities, companies want employees with the knowledge and skills to work across cultures. Therefore, students must be prepared with the employability skills to compete, connect, and cooperate on an international scale. This session will share new free tools, resources, and strategies to integrate global employability skills into work-based learning experiences at both the secondary and postsecondary level.

How to Build a State Division.....MPDC 226

Presenter(s): Jan Jardine

Are you wanting to find ways to connect and collaborate with fellow WBL professionals in your state? Hear from ACTE members in Utah about the process used to form a state division along with benefits and challenges associated with it.

Letting Interests Drive: Real-World Learning.....MPDC 224

Presenter(s): Wilson Platt (Big Picture Learning / ImBlaze)

As districts, nonprofits and foundations rush to scale work that focuses on students outside-of-school learning, questions remain: How do schools find the capacity to build these programs? How do educators build the mentor networks needed to provide these opportunities? What distinguishes high-quality and low-quality real-world learning? Participants will choose from three pathways and walk out of the session with easy next steps to start — or improve — their school's real-world learning program.

Partnering with Employers to Design WBL Experiences: Considerations and Lessons Learned.....MPDC 228

Presenter(s): Pam Carter

Work-based learning experiences are often considered high-impact practices in postsecondary education, and especially so for CTE. This session presents a case study of design considerations taken when partnering with employers to provide a portfolio of postsecondary experiences spanning the WBL continuum. We will highlight how and why the design of WBL experiences, when jointly undertaken with employer partners, has implications for learner, faculty, and employer engagement, as well as administrator effectiveness. Lessons learned in the context of WBL success will be shared.

Creating and Sustaining Work-Based Learning for Special Populations...MPDC 220

Presenter(s): Alexa Green, Emily Sherwood

We will discuss how to create and sustain a system in a classroom and school

that promotes work-based learning for all. This includes how to include students from special populations in meaningful work-based learning in the classroom and in the community, how to build relationships with partners to encourage community work-based learning for special populations, examples of work-based learning programs and lessons in the classroom for special populations, and answers to FAQs about special populations and WBL. We will also discuss how opening up our career development program beyond special populations helps sustain work-based learning through professional skill development for all students who need it. This is all done through collaboration within the school and the community.

Roundtable Presentations (150 A-H)

Friday, April 29

8:15–9:15 a.m. MT

Roundtable #1: Work-Based Learning as an Instructional Strategy

Presenter(s): Angela Higdon

Participants will learn the importance of aligning work-based learning to classroom learning rather than having it be “another thing.” We’ll provide tools and work time to plan WBL into your courses as well as a variety of options for bringing WBL to students in a virtual world!

Roundtable #2: Exploring Work-Based Learning in Junior High

Presenter(s): Jali Page

Prepare students for their future of work-based learning in technology and coding. Students learn how to create apps, code projects, and build robots in STEM classes to help prepare them for IT jobs in a dynamic and changing industry.

Roundtable #3: Expanding WBL in Core Classes with Capstone Mentorships

Presenter(s): Miranda Ziegler, Jenny Lammers

Join this roundtable for a presentation and discussion on best practices for engaging industry, scaffolded engagement to build educator capacity and student success with mentorships. Jeffco Public Schools Career Links will provide an overview of this work across our district using Jeffco Career Links toolkits and resources for this discussion.

Roundtable Presentations

Roundtable #4: Faux-Flipping a Supportive Housing Training: Lessons from Pandemic Adaptations

Presenter(s): Shelley K. Buchbinder

Following the March 2020 pandemic closures, the Community Support Services New Jersey supportive housing work-based training series quickly transitioned from in-person to remote. The faux-flipped model includes all content during scheduled learning time, better suited to busy adult learners than the better-known flipped model in which self-paced content is accessed outside of learning time. From program data collected between spring 2020 and spring 2021, the faux-flipped adaptation of short mid-training interactive video lectures increased participation and reported outcomes over traditional in-person presentations and longer video lectures. Another benefit included the reuse of video lectures, saving time and effort. The training program will continue to use the faux-flipped training model after pandemic restrictions are fully relaxed. The presentation covers the faux-flipped model employed, the results of implementation, and implications for work-based learning.

Roundtable #5: Challenges and Best Practices for Rolling Out Work-Based Learning Programs — From the School, Business and Workforce Program Perspectives

Presenter(s): Tricia Munoz, Allison Grenney

This session will explore the challenges of rolling out a WBL program head-on with examples of what school districts, businesses and workforce programs have learned in working through these experiences. We'll surface ideas for how you can help prepare businesses to host students, prepare students for the workplace, and utilize technology to make the processes easier, quicker and trackable.

Roundtable #6: Amplify Your Work Based Learning

Presenter(s): Olen Anderson

Learn how the future of WBL Tech can increase your pathway engagement and enrollment, improve your student outcomes and state reporting through competency-based assessment.

Roundtable #7: Want to Promote Your Program? Let Students Do It!

Presenter(s): Brian Blake, Brad Northcutt, Robyn Dunn, Aubrey Turnbow, Kelly Seale

Gather and share ideas of how to have your students promote your classes.

What are you doing to promote your programs? Most importantly, what can your students do to promote your program? We all know that students have the biggest influence on the growth of a program. Let's collaborate and learn from each other on how the students can put the good word out about our classes. LinkedIn is a great way to have students promote what they are doing in class while fulfilling the portfolio expectation within the curriculum.

Concurrent Session 3

Friday, April 29

9:30–10:20 a.m. MT

Equitable Access: A collaboration between CTE and Special Education to support WBL opportunities and Career Development Credential completion.....MPDC 105

Presenter(s): Kristy McLachlan, Kristen Linares

Tooele County School District, a smaller rural school district in Utah, is leading the way in providing more inclusive work-based learning opportunities for all students. CTE and SPED collaborated to provide appropriate curriculum and access to internships within the district. Come see a practical approach to linking students to CTE courses, work-based learning opportunities and Career Development Credential completion.

Profession-Based Learning: A Student Perspective.....MPDC 209

Presenter(s): Jan Jardine and student panelists

Hear from a panel of students who have participated in profession-based learning programs in the state of Utah. These students will share their experiences and discuss how these experiences have helped them achieve their goals.

Maximize ROI from the Employer Perspective.....MPDC 226

Presenter(s): Dr. Christine Bosworth (Business U., Inc.)

Employers and those who serve their workforce needs are going through a fundamental transformation while confronting the mismatch between employer needs and the available labor force. This session will transform the outdated approach of how educators and workforce development employer-facing professionals engage with industry by strategically focusing on ROI from the employer perspective and articulating what is of value to them to meet current workforce needs; and as importantly, help them prepare for the future of

Concurrent Sessions

work within their sector, resulting in expanded employment opportunities and economic mobility for job seekers and students as well as upskilling incumbent workers to gain a competitive advantage.

Addressing Barriers to Work-Based Learning.....150 A-H

Presenter(s): Kristy Volesky

Work-based learning supports relevant and engaging student learning. In order to ensure equity with work-based learning experiences for all students, barriers to access must be addressed. Join this session on addressing barriers to work-based learning to identify strategies to increase equitable access to work-based learning. This session will address common barriers and will include an interactive portion where attendees can share additional barriers and strategies.

Regional WBL & Apprenticeship Ecosystem.....MPDC 224

Presenter(s): Dana Wilson

Great things are happening in south central Virginia, where 15 school districts have partnered to provide access to an online career exploration platform for all students in grades 6–12. The grant that supports the cost of this platform also supports the salary for a regional work-based learning coordinator, who is taking steps to create a regional WBL and youth apprenticeship ecosystem in alignment with Virginia state standards. Hear about how these 15 school districts are “in it together” to provide opportunities for students to explore careers that will hopefully lead to retaining a skilled workforce in southern Virginia.

The Workplace Learning Challenge Model: An Authentic and Relevant Approach to Project-Based Learning.....MPDC 220

Presenter(s): Stephen T. Casa, David Rosenberg

Authentic experiences make for the best possible learning opportunities. When students are solving real problems that industry and community partners bring to them, they are getting the most relevant, authentic experience possible. When you tie in process-based learning, opportunities for industry/community partner feedback, reflection, and curation, you’re creating the perfect storm for real, deep, meaningful learning. The workplace learning challenge model does all of this and more. It’s also a great, low-lift way to engage business partners and get them interested in your program.

Building a Workforce for a Reliant Economy.....MPDC 228

Presenter(s): Will Castillo

The pandemic has forced many to rethink norms and strive for a resilient economy and workforce. Hana Career Pathways is a grant project funded by the Department of Education to reimagine Hawaii's economy and workforce by growing pandemic resilient industries like healthcare, trades, and information technology. This session will present lessons learned at the halfway point of the grant and describe the innovative work based learning and employer engagement strategies of the Hana Career Pathways project.

Are They Ready?.....MPDC 213

Presenter(s): Stephen Harper

Although the discussion of career readiness often focuses on student preparation, employer partnerships with career development and higher education serve a pivotal role in creating equitable outcomes. This presentation examines strategies taken by Hennepin Technical College's Student Life and Career Development department to provide access, support and guidance to employer partners to build more inclusive and equitable workplaces through internships and partnership activities.

Concurrent Session 4

Friday, April 29

11:30 a.m.–12:20 p.m. MT

Expansion of a Skilled Trades Pre-Apprenticeship Model via Virtual Education Partners.....MPDC 105

Presenter(s): Nicholous Sutherland

Attendees will become familiarized with learner outcomes associated with student engagement in a Virtual Registered Heavy Machine Operators Pre-Apprenticeship program developed in partnership with Local 139 in Wisconsin and recently expanded in partnership with Local 49 to Minnesota. Attendees will understand the engagement with Affiliated College Partners that support transcripted credit and program implementation and oversight provided by Education Service Provider Stride Inc. Attendees will also engage in dialog and reasoning associated with program expansion, creating solutions for adult learners and expanding this model to other Skilled Trades.

Concurrent Sessions

High-Quality WBL: Advancing Equity and Access.....MPDC 209

Presenter(s): Dr. David Eshelman, Sharon Acuff, Allison Grenney

Does your state need a roadmap for how to align graduation requirements, connect students to opportunities, and create strong business partnerships to ensure program success? And have you struggled to engage rural communities in work-based learning? In this session, the Virginia Department of Education will share how they are successfully building work-based learning partnerships and empowering local areas to develop their own programs. By linking graduation requirements that support work-based learning, they are engaging students, businesses, and state leaders in defining the future of work-based learning throughout the state. We'll also explore the technology they are using to help make connections and track work-based learning programs, especially in rural areas.

Regional Partnerships to Promote Meaningful WBL for All Students....MPDC 213

Presenter(s): Chuck Carter, Dr. Rebecca Campbell, Daniel Aldridge

Hamblen and Jefferson Counties have joined forces with six other school districts to build CTE programs of study that incorporate meaningful WBL job opportunities for all students. Access to postsecondary institutions and the opportunity to pursue a high-demand, highly skilled career should not be limited to those with the right zip code. See how the joint efforts of like-minded school districts and communities can make a difference in your ability to offer these life-changing experiences to your students. You will walk away from this session with creative ways to include WBL internships, pre-apprenticeships, and apprenticeships in all career clusters; ways to build partnerships with employers; and learn about how to engage more stakeholders in the counseling and advising of your students.

Work-Based Learning Opportunities on the Continuum, Part One: Career Awareness & Exploration.....MPDC 220

Presenter(s): Twyla Hough, Cynthia Miller

Session attendees will receive an introduction to strategies for planning and implementing opportunities that follow the WBL continuum. The presenters will share data collected in their 2020 work-based learning survey of 192 FCS teachers in Texas. They will lead a discussion that addresses WBL challenges and barriers, employer partnerships, assessment measures, and numerous resources specific to career awareness and career exploration. Tips on developing a plan of action will also be discussed. To allow time for interactive

engagement, idea sharing, and exploring online examples, this session specifically addresses the first half of the WBL continuum. Career Planning and Employment Training will be the topic of a separate session.

Work-Based Learning Resources.....MPDC 226

Presenter(s): Mary Berg, Brandi Bjorklund, Steve Schlager

This presentation covers essential work-based learning resources, such as marketing materials and promotion ideas, forms and tools for coordinators, and reports and data collection. Templates and samples will be provided.

Canyons WBL — “Everything between the Canyons”.....MPDC 228

Presenter(s): Patricia A. Larkin, Janet Jefferson, Eileen Kasteler

Work-based learning for all students between the Canyons. An overview of what work-based learning experiences we offer students in Canyons District in Utah.

A Statewide Approach to Work-Based Learning: The Iowa Intermediary Network.....MPDC 224

Presenter(s): Gena Gesing, Stephanie Dennler

In 2014, the state of Iowa allocated funds for the creation of the Iowa Intermediary Network (IIN) with the purpose of expanding statewide K–12 work-based learning opportunities. Learn how the IIN has evolved and continues to expand services through both statewide and regional efforts that impact students, educators, business partners, and state organizations. A review of the IIN structure, website resources, and essential partnerships will facilitate discussion and workshop components to assist you in determining how the Intermediary concept could work for you!

Building Career Intelligence and Employability Skills with the Skills to Succeed Academy.....150 A-H

Presenter(s): Thomas Flake (Accenture)

In 2014, the state of Iowa allocated funds for the creation of the Iowa Intermediary Network with the purpose of expanding statewide K-12 work-based learning opportunities. Learn how the IIN has evolved and continues to expand services through both statewide and regional efforts that impact students, educators, business partners, and state organizations. A review of the IIN structure, website resources, and essential partnerships will facilitate discussion and workshop components to assist you in determining how the Intermediary concept could work for you!

Concurrent Sessions

Concurrent Session 5

Friday, April 29

1:30–2:20 p.m. MT

Engaging Students through Alternative Work-Based Learning Opportunities.....MPDC 226

Presenter(s): Jillian Berg (Virtual Enterprises International)

Given the uncertainty of the availability of on-site work-based learning experiences during this time, educators have been making their best efforts to create alternative ways that students can develop the competencies necessary for success in postsecondary education, life and work. In this session, participants will discuss the challenges and opportunities in using online and hybrid learning environments to help students gain meaningful career readiness competencies. In addition, programmatic and pedagogical strategies to increase student engagement and interaction will be shared.

Inclusive Workforce Readiness: Apprenticeships for Youth with Disabilities.....MPDC 209

Presenter(s): Sydney Blodgett

Apprenticeships have long been recognized for their value in allowing apprentices to gain hands-on training and practical on-the-job experience. This presentation will outline the value of apprenticeships for exceptional youth, provide examples of various strategies states have taken to make apprenticeship programs more inclusive, and identify areas ripe for apprenticeship expansion. The presentation will include strategies to: increase the availability of apprenticeship programs; improve the inclusivity of apprenticeship programs; expand apprenticeship to more occupations and industries; and increase the resilience of apprenticeship programs.

Piloting WBL in Local Government Offices.....MPDC 213

Presenter(s): Dana Wilson

This presentation will outline a two-month turn-around partnership with local government to place 27 students in one district and 15 students in another district into paid internship experiences. We will explore how both districts conducted their student recruitment for these opportunities to ensure equitable access for all. We will review participant survey responses to identify improvements for next year's program and discuss how this initiative resulted in a much larger regional program to fund more paid internships across Virginia.

Work-Based Learning Opportunities on the Continuum, Part 2: Career Preparation & Employment Training.....MPDC 220

Presenter(s): Twyla Hough, Cynthia Miller

Session attendees will receive an introduction to strategies for planning and implementing opportunities that follow the WBL continuum. The presenters will lead a discussion that addresses WBL challenges and barriers, employer partnerships, assessment measures, and numerous resources specific to career preparation and employment training. Tips on developing a plan of action will also be discussed. To allow time for interactive engagement, idea sharing, and exploring online examples, this session specifically addresses the second half of the WBL continuum. Career Awareness and Career Exploration will be the topic of a separate session.

You Can Do Work-Based Learning in Rural Communities!.....MPDC 224

Presenter(s): Gena Gesing, Stephanie Dennler

Northeast Iowa Community College's College and Career Connection program (a member of the Iowa Intermediary Network) covers 5,000 square miles and 23 school districts, with 21 districts located in rural areas. Their innovative regional approach to work-based learning follows the career continuum and strives to ensure that students get opportunities to work-based learning by eliminating barriers. Partnerships with other regional entities as well as businesses throughout the region assist in creating a variety of experiences that follow the Iowa Intermediary Network menu of statewide services. Attend this session to find out more about this successful rural model, and determine which components of College and Career Connection might work for you!

Take WBL Completely Digital: Program Adjustments to Save Time and Money.....MPDC 105

Presenter(s): Jason Van Nus

This session will examine creative ways to move your work-based learning and apprenticeship programs into the digital world. These digital techniques will help slay your "year-end reports" by learning how to collect all necessary data more efficiently and become more organized, detailed, and productive in managing our WBL/YA programs. This session has something for everyone: valuable for both system- and school-level coordinators, as well as supervising administrators. It will cover topics useful for participants regardless of their proficiency with technology.

Concurrent Sessions

Planning for Equitable Postsecondary Success.....MPDC 228

Presenter(s): Ken Broermann (Transeo)

With the radical changes in the education landscape, educators must rethink the question: How can we truly prepare students for postsecondary success? In this presentation, we'll talk about supporting the diverse needs of every student, with an emphasis on crafting, sustaining, and scaling work-based learning programs. We'll touch on some of the most common challenges educators face, including:

- Creating relevant, accessible experiences
- Building and maintaining a business partner database
- Marketing WBL programs to the community
- Building and supporting the talent pipeline
- Removing equity roadblocks
- and more.

Concurrent Session 6

Friday, April 29

2:30–3:20 p.m. MT

School to Work Connections – Developing a Local Student-Employer Pipeline.....MPDC 209

Presenter(s): Michael Turner, Philip Gibert

As more and more career sectors face talent gaps, CPS has positioned itself to help meet industry talent needs through the connection of school to employer partnerships. Area businesses can elect to partner with the district to train and employ students during high school. In addition to industry-specific training, students also get an opportunity to learn about financial literacy and employability skills that will make them successful in their careers. The goal is that students walk away with in-demand skills and a job offer upon completion. With this focus on growing in-home local talent, regional efforts can be strengthened in maintaining a thriving city and preventing potential talent from migrating to other cities. CPS will present how to develop a robust pipeline through working with state work-based learning standards that lead to graduation, co-creating meaningful partnerships through business engagement, and aligning school-based curriculum to industry-related standards that align to

student goals. A specific model partnership with a local healthcare system will be highlighted.

A Winning Partnership: Work-Based Learning, Industry Partners, and Postsecondary Institutions.....MPDC 105

Presenter(s): Jason Van Nus

This session will provide a comprehensive overview, from conception to launch, of a Georgia WBL partnership model between a local high school, a local employer, a postsecondary institution, and the GaDOL. This program model was designed to be easily replicated by other companies and their partners. Proof of concept has been established not only with the inaugural company, but also with other businesses using this model.

Attend this session to see how we created this model from scratch to serve all four entities, our local workforce, our local industries/economy, but most importantly — our students; who were able to concurrently earn credit in high school, college, and with the GaDOL as registered apprentices! All presentation materials will be made available to session participants.

Level Up: Growing Your WBL Continuum.....MPDC 213

Presenter(s): Celena Mills

Growing a work-based learning continuum can feel like a daunting undertaking, and coordinators and administrators may struggle to find strategies to assist teachers in the development of these opportunities for students. This session will teach you how to coach teachers to “level up” existing practices, develop new opportunities that can expand over time, and breathe new life into your current programs. Participants will leave with strategies and a plan of implementation to put into practice for the upcoming school year.

This session is designed for staff leading work-based learning but will also be valuable to teachers or others implementing work-based learning in the classroom.

Panel Discussion: Integrating Profession-Based Learning into Your WBL Program.....MPDC 220

Presenter(s): Gregg H. Brown, Jan Jardine, Jay Welk, Ben Kusch, Lyndsay Huntsman, Ronda Hair

Profession-Based Learning (Pro-BL) integrates project-based learning and work-

Concurrent Sessions

based learning through a distinct set of experiences designed and executed with industry partners. Learn from a panel of experts how different programs can customize the CAPS Five Core Values into learning experiences that optimize student outcomes and meet communities' needs.

Work-based Learning: Authentic WBL or Checking the Box.....MPDC 224

Presenter(s): James R. Stone III

Work-based learning (WBL) is a critical CTE pedagogy that can facilitate the transition of youth to a productive adulthood through occupational socialization. Yet few American students engage in authentic WBL, unlike students in European nations. This session will share elements necessary for effective, authentic WBL critical to students' career development and occupational socialization.

From Cooking to Catering — How to Add Work-based Learning to Any Classroom.....MPDC 226

Presenter(s): Sonora Jones

In this session, we will walk you through the steps we took to start our Culinary Arts Work-Based Learning take-home meal business. We will walk through the process from start to finish of implementing this program and what we've learned along the way. This session is for all content areas, and you'll leave with tips and tricks for creating timelines, grading, and more associated with work-based learning.

Increasing Student Impact through WBL.....MPDC 228

Presenter(s): Brooke Rice, Stephanie Lapera, Cassie Yung, Kirsten Kirby (NAF)

Work-based learning has once again become a popular topic of conversation in legislative and educational circles. How do we ensure that the student impact of these activities remains the central focus and not just another accountability indicator? How can we allocate our time to planning high-impact WBL and ensure our students get the most out of these opportunities? The NAF team will be sharing learnings, best practices and free resources you can use in your schools right away!



Connecting Education and Careers

acteonline.org

INVEST IN YOURSELF!

Join or renew your
ACTE membership at
acteonline.org/join

BUILD YOUR COMMUNITY

Engage with a global network of career and technical education professionals, state associations, corporate and affiliate partners and supporters

BE INFORMED

Stay in the know with the latest news and research

- *Techniques* magazine
- CTE fact sheets, infographics and research
- Weekly newsletter and member-only content
- Digital subscription to *CareerTech Update* and *STEM SmartBrief*

AMPLIFY YOUR VOICE

- CTE advocacy resources, tips and tools
- CTE Policy Watch Blog
- Legislative alerts

PROTECT YOURSELF

- ACTE members receive free AD&D insurance and access to several member insurance offerings, including professional liability and group term life, at competitive rates


EXPAND YOUR CTE KNOWLEDGE

- Access to member pricing to several ACTE events, including CareerTech VISION, the largest annual conference for career and technical educators
- High-quality CTE tools to enhance your CTE programming
- Extensive online learning via CTE Learn, webinars and special CTE workshops
- ShopACTE, your one-stop shop for CTE books and products
- Leadership development programs

AMPLIFY YOUR ACHIEVEMENTS

- Member recognition and awards program
- Member spotlights via ACTE communication channels

Follow us on social media

 @ACTECAREERTECH

 @ACTECAREERTECH

 @ACTECAREERTECH1

THE CAREER AND TECHNICAL EDUCATION EVENT OF THE YEAR!

ACTE's CareerTech

VISION

2022

NOV. 30-DEC. 3

Las Vegas

www.careertechvision.com

ACTE