



Professional Learning Series

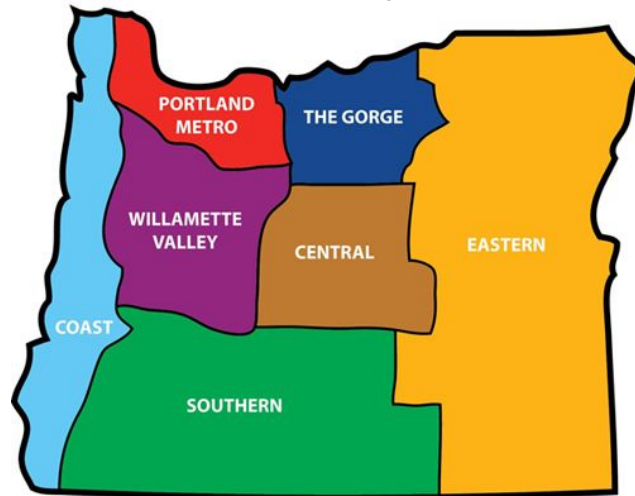
New Teacher

“High Quality Program of Study”

January 23, 2024

# WELCOME

What part of the state are you from  
and what do you teach?



Put into the chat!

# What is a CTE Program of Study?

*Fuel the Future*



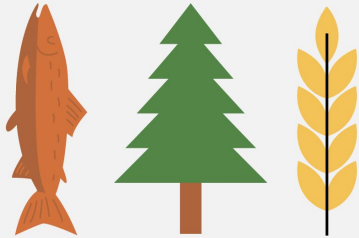
# A State Approved CTE Program of Study is

a **non-duplicative sequence of secondary and postsecondary career-focused courses** that could lead to a postsecondary certificate of completion, a degree, or an industry recognized credential.

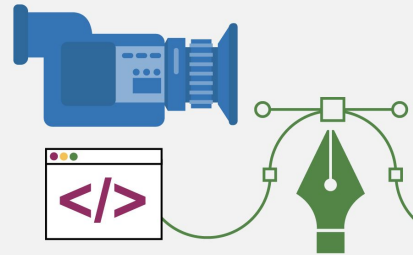


# Six Career Areas of CTE Programs of Study

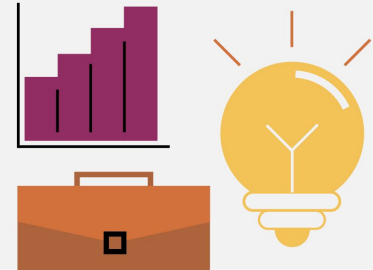
Agriculture, Food, and  
Natural Resources Systems



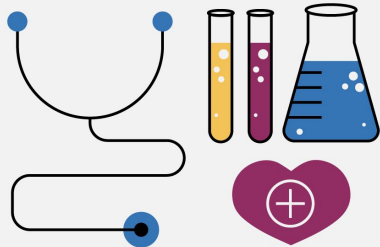
Arts, Information, and  
Communications



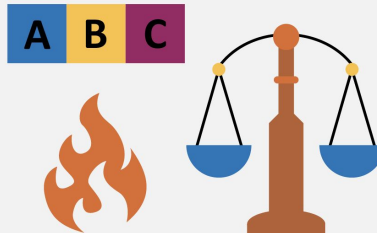
Business and Management



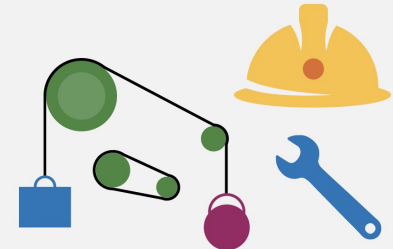
Health Sciences



Human Resources



Industrial and Engineering  
Systems



---

What Career Area does your  
program of study support?



# Requirements of a CTE Program of Study

---



- Lead to a high-skill, high-wage, in-demand career
- Be accessible and inclusive
- Tie to business and industry knowledge and skills
- Integrate academic and technical skills and knowledge
- Provide Work-Based Learning opportunities for students

# Requirements of a CTE Program of Study

---

- Span both high school and college and be aligned or articulated
- Tied to labor market needs
- Provide student supports and services including guidance
- Include student leadership opportunities
- CTE licensure for teachers in high schools





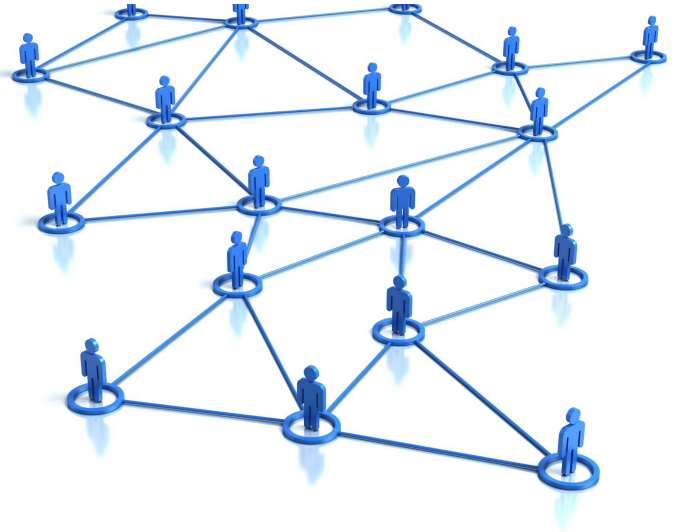


Tell us about you program...

- Did you step into an existing program of study?
- Are you starting a new one?

# High Quality CTE Programs Include:

- Partnership with your CTE Regional Coordinator
- Alignment to community college programs and connection to business needs (Labor Market Information - LMI)
- Advisory committee specific to the Career Area
- Qualified teachers
- Data and federal accountability requirements
- Work-Based Learning opportunities for students
- Ongoing Professional Development



# Size, Scope, and Quality creates the foundation for a CTE Program of Study



## HQPOS Rubric

Element	Level 1 - Does not Meet the Requirements	Level 2 - Minimally Meets	Level 3 - Meets Requirements	Level 4 - Exceeds Requirements
<b><i>Rigorous Integrated Content Criteria #1</i></b>	Students in CTE classes do not have the opportunity to complete rigorous core academic coursework that is applicable to career interests.	Students in CTE classes have limited opportunities to complete rigorous core academic coursework that is applicable to career interests.	Students in CTE classes have numerous opportunities to complete rigorous core academic coursework that is applicable to career interests.	Students in CTE classes continuously complete rigorous core academic coursework that is applicable to career interests.
<b><i>Rigorous Integrated Content Criteria #2</i></b>	Secondary component of the program does not have a	Secondary component of the program has either a minimum	Secondary component of the program has a minimum of 3	Secondary component of the program has a minimum of 3

---

## Discussion:

- Do you have an advisory board?
  - B/I partners?
    - How do they support your program?
- What Community College does your program align with?
  - Have you met any program faculty?



# Resources

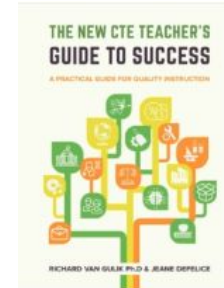


- ❑ [Oregon High Quality CTE Program of Study \(HQPOS\) Rubric](#)
- ❑ [Quick Guide to Using the HQPOS Rubric](#)
- ❑ [CTE Policy Guidebook](#)
- ❑ [A Guide for Secondary CTE Program Applications/Renewals  
2022-2023](#)

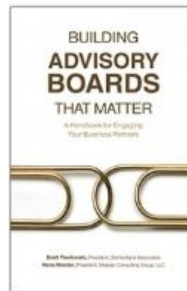
# Highly Recommended Books



[Your First Year in CTE: 10 Things to Know](#)



[The New CTE Teacher Guide to Success - A Practical Guide for Quality Instruction](#)



[Building Advisory Boards that Matter](#)