



# Building & Maintaining Business Partnerships

Jan Jardine, Provo City School District, Provo, Utah

# What do you need?

Guest speakers, career fair presenters, internship mentors, ...






**It's not what you know,  
it's who you know."**




**It's WHAT you know  
about WHO you know."**


# Who am I?



**Jan Jardine, MBA** (She/Her)  
Passionate educator who is committed to helping students prepare for the future!

Orem, Utah, United States · [Contact info](#)

 Provo City School District

 Utah Valley University



# LISTEN

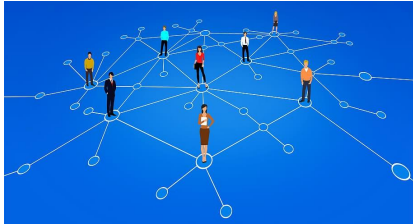
Take the time to really listen to the people you are working with—students, business partners, teachers, presenters, etc.



**How can you add VALUE?**

# Where can you find partners?

**LinkedIn** 



**PTA**<sup>®</sup>  
*everychild.onevoice.*<sup>®</sup>





# Meet Joshua



Animal Behaviour  
Volume 173, March 2021, Pages 137-144

Review

## The development of animal personality across ontogeny: a cross-species review

Doreen Cabrera <sup>1</sup>, Joshua R. Nilsson, Blaine D. Griffen

Show more

+ Add to Mendeley Share Cite

<https://doi.org/10.1016/j.anbehav.2021.01.003> Get rights and content

### Highlights

- Animal personality traits tend to be stable within life stages but not across.
- Metamorphosis and/or sexual maturation are important for personality development.
- Methodological standardization is necessary for animal personality progression.

Animal personality is defined as consistent individual behaviour over time and across contexts, yet most studies to date only measure behaviour within a single life stage. Up to this point, developmental perspectives in the field of animal personality have received little attention. Here, we review those empirical studies that have assessed personality across major developmental periods, including metamorphosis and/or sexual maturation. We specifically focus on life history differences between direct and indirect development to enhance our understanding of the mechanisms underlying personality development. We also discuss conceptual and methodological inconsistencies across the studies reviewed here that may impede the advancement of animal personality research. We found that standardization of



 **Marissa Barlow** • 1st  
Founder of Nani and Strategy Student at BYU  
2mo • 🌐

40 UNDER 40 what?? 🤔

It feels like yesterday I was that 17 yr old girl working at Mo Bettahs sketching swimsuit designs on sticky notes and hiding them under the register when anyone came in. Six years later I am honored to be recognized as one of [Utah Valley Magazine's 40 under 40!](#) Grateful everyday for the best co-founders, professors, team, and friends in the world. Stoked to continue growing Nani and finding more ways to help lift women. ❤️



**RISS BARLOW**

  You and 607 others

58 comments • 1 share

Reactions



# Nani Swimwear

Marissa Barlow, Founder



# Interested In Sponsoring Teen Entrepreneurs?

For the first year ever, Provo CAPS, in partnership with the Utah Valley Chamber of Commerce, will be hosting a Shark Tank competition for 9th-12th grade students. Contestants will pitch their business idea to a panel of five judges (sharks), for the chance to receive funding and networking opportunities to help develop their business.



Scan for More  
Information &  
Sponsor Sign-up

For Sponsor Inquiries Contact

Curtis Blair  
Curtis@thechamber.org  
(801) 691-8323

---

## Provo CAPS Shark Tank Competition

Sponsored by  
Utah Valley Chamber of Commerce



# Conferences and Events

Take time to connect with  
presenters and attendees



## Growing your startup business!

This 2 day conference is built with  
YOUR START UP in mind.

Utah Valley  
University

Sept 9 & 10

Speakers, Booths, Food, Networking, and everything you will  
need to help you start or grow your own  
start up business

### Key Sponsors



### Partners



Utah Department

of Workforce Services

**UTAH VALLEY**



**J**

**O**

**B**



**FAIR**

**FREE**  
for Job Seekers

Already connected and have strong relationships with employees





## I have business partners, now what?



Be engaged



Be consistent



Show gratitude



---

# Thank You!

Questions?

Jan Jardine

[janj@provo.edu](mailto:janj@provo.edu)